



Applications

- Energy Systems
 - Wind turbines
 - Solar farms
 - Transformer station
 - Combined heat and power units
 - Biogas cogeneration systems
 - Heat pumps, ...
- Water and waste water management
- System monitoring in machine building
 - Washing machines
 - Packaging machines
 - Compressors, ...
- External surveillance camera
- Vending
 - Telemetry online sales or ticket machines
- Smart metering
- Mobile fleet management

wienet VPN Industrial Router – unlimited M2M communication

Functionality which convinces

Wieland's **wienet** VPN industrial routers ensure increased efficiency and data security. Whether it is about the control of machines, monitoring of production lines or the coordination of all production areas a permanent communication between devices is needed to complete such a complex task. Access to stored data using wireless networks is not always possible or safe. Now Wieland develops with its modern router technology new fields of applications. For example control commands, level indicators or video signals can now be transmitted. At download speeds of up to 100 Mbit/s and upload speeds of up to 50 Mbits/s (depending on the network operator) the **wienet** VPN industrial router is sure to cover the available connectivity options of GPRS up to LTE. With automatic login wienet VPN industrial router will always access the fastest available connection.

Each router has its own IP address and can be configured through the integrated web interface.

It supports services such as DHCP, NAT and DynDNS. The routers communicate directly or via the control panel to open a secure VPN connection. The establishment of an IPSec encrypted tunnel is alternatively possible.

wienet VPN routers are ideal components for industrial use in conjunction with VPN-service portals, such as Wie-Service24.

With the arrangement of the ports on the frontpanel and a standard USB port, the **wienet** VPN industrial router are extremely user friendly. A clear statistic of mobile connections is used for better control.

Optionally, the devices are available with a second SIM card slot, additional I/O, RS-232, RS-422/RS-485, M-Bus, several Ethernet interfaces, WiFi module or integrated 3 or 5 port switch.



Advantages

- Expanded operating temperature range of -40°C to 75°C
- DIN top hat rail assembly
- An extremely robust aluminium housing

Industrial mobile router WR-LTE v3

wienet WR-LTE v3 SL

- High-performance CPU Cortex A8, 1 GHz (2000 DMIPS)
- Memory: 256 MB flash memory, 512 MB RAM, 128 kB M-RAM
- 2x SIM card slot (Mini SIM 2FF)
- 2x or 5x Ethernet
- 1x RJ45 port expansion RS232 or RS485/422
- 1x USB 2.0 host
- 2x DI
- 1x DO
- 1x MicroSD
- 3 antenna ports: Main, DIV, GPS, WIFI (optional)
- 1x WIFI/WLAN 802.11 b/g/n (optional), supports access point and client mode

Delivery scope:

- VPN mobile router
- Including mobile radio antennas and WIFI antenna (optional)
- Including USB stick with documentation
- Including RJ45 patch cable
- Including DIN rail (top hat rail) adapter



Type	Interfaces	Art.No.
wienet WR-LTEv3 SL		
WR-LTE v3 SL	LAN, USB, DI, DO, 2xSIM	83.041.0700.1
WR-LTE v3 SL WIFI	LAN, USB, DI, DO, 2xSIM, RS232	83.041.0760.1
WR-LTE v3 SL RS232	LAN, USB, DI, DO, 2xSIM, RS485/422	83.041.0701.1
WR-LTE v3 SL RS232+RS422/485	LAN, USB, DI, DO, 2xSIM, M-Bus	83.041.0702.1
WR-LTE v3 SL RS232+RS422/485 WIFI	LAN, USB, 5DI, 3DO, 2AI, 2xSIM	83.041.0762.1
WR-LTE v3 SL 5-Port	2xLAN, USB, DI, DO, 2xSIM	83.041.0709.1
WR-LTE v3 SL 5-Port WIFI	LAN, USB, DI, DO, 2xSIM, WIFI	83.041.0769.1
Networks		
DHCP - automatic IP address in LAN network	NAT/PAT - Network/Port Address Translation	
SNMP v1/v2c/v3 - Network management, communication to router and its I/O and M-Bus modules	VRRP - redundant communication paths (routing)	
DynDNS - access to router if dynamic IP used	Dial-In - Dial-up router option (network) - communication via "CSD call"	
Integrated firewall (SPI)	OSPF, BGP, RIP - routing protocols (optional)	
VLAN, QoS - expanded Layer 2 network functions (optional)	DMVPN	
PPPoE bridge	IGMP, BGP, OSPF, RIP, SMTP, SMTPS	
VPN tunnel		
Secure data encryption with IPSec and OpenVPN (including X.509 certificates)	Basic data transmission without encoding via GRE and L2TP tunnel	
EasyVPN		
Configuration and diagnostics		
Configuration and firmware update via Web interface, USB stick and central Internet server	Remote router maintenance via SMS - switch Internet connection on and off, change SIM card, switch digital output, query status information	
Change between different configuration profiles (via Web interface, SMS, digital input or scheduler)	Comprehensive mobile radio statistics options (reception strength, radio cell, adjacent cell, transported volume, connection cancellations, etc.)	
LED status display	Network status	
Mobile radio status	One-CLICK reports: Current configuration, system log, routing table, reboot log, kernel log	
SNMP v1/v2c/v3 - status query		
Optional expansions		
Second SIM card - redundancy to protect communication when roaming; data volume used and active digital input (DI)	User (software) module - various function expansions	
Wie-Service24 - VPN server portal		
Additional functions and characteristics		
NTP client, NTP server - time synchronization	Communication via SMS - AT commands to the RS232, Ethernet and I/O interface	
Script programming - StartUp script, Up/Down script	Script language Bash, Python	
Technical data		
Mounting	DIN rail (top hat rail) or table	
Operating voltage	10 - 60 V DC	
Power consumption typical / average / peak / sleep mode	2.5 W / 4 W / 11 W / 10 mW	
Operating temperature / storage temperature	-30 ... +60 °C / -40 ... +85 °C	
Humidity	0 ... 95 %	
Protection type	IP30	
On-board I/O	6-pin plug-in socket	
- Output (DO)	300 mA / max. 60 V	
- 2x input (DI)	10-60 V DC	
Dimensions (HxWxD)	125 x 55 x 97	
Weight	375 g	
Antenna connector		
- ANT + DIV mobile radio antenna	SMA	
- GPS antenna	SMA	
- WIFI antenna (optional)	R-SMA	
Frequency bands		
- GSM/GPRS/EDGE	900/1800/1900 MHz	
- UMTS	900/2100 MHz	
- HSPA+	900/2100 MHz	
- LTE	800/900/1800/2100/2600 MHz	
Bit rates		
- Download Upload GPRS/edge	Max. 236.7 kbit/s Max. 118.4 kbit/s	
- Download Upload UMTS/HSPA+	Max. 21.1 Mbit/s Max. 5.76 Mbit/s	
- Download Upload LTE	Max. 100 Mbit/s Max. 50 Mbit/s	
Technical data GPS		
- Protocol	NMEA 0183 v3.0	
- Frequency	1575.42 MHz	
- Antenna	50 Ohm - active	
Technical data microSD		
- Supported technologies	SDHC, SDXC	
- Supported capacities	SDHC to 32 GB, SDXC from 32 GB to 64 GB	
Complies with standards	EN 61000-4-2 (ESD), IEC 61000-4-3 (RF field AM modulated), EN 61000-4-4 (fast transient), EN 61000-4-5 (surge), EN 61000-4-6 (RF-conducted), EN 55022, EN 61000-4-8, EN 60068-2-2, EN 60068-2-1, EN 60068-2-78, E8 10R-04	

Industrial mobile router 4G LTE v2

wienet LTE LR77 v2 SL „Basic“

- 1x SIM card slot
- 1x Ethernet
- 1x RJ45 port expansion
- 1x USB
- 1x DI
- 1x DO

wienet LTE LR77v2 SL „Compact“

- 2x SIM card slot
- 2x Ethernet (LAN-to-LAN or switch-bridge)
- Best price-performance ratio
- No USB interface
- No DI

wienet LTE LR77v2 SL „Full“

- 2x SIM card slot
- 1x Ethernet
- 2x RJ45 port expansion
- 1x USB
- 1x DI
- 1x DO
- GPS receiver (not in combination with WIFI)

Delivery scope:

VPN mobile router
Including antennas
Including USB stick with documentation
Including RJ45 patch cable
Including DIN rail (top hat rail) adapter



Type	Interfaces	Art.No.
wienet LR77v2 SL Basic		
LR77v2	LAN, USB, DI, DO, 1xSIM	83.041.0050.1
LR77v2 RS232	LAN, USB, DI, DO, 1xSIM, RS232	83.041.0051.1
LR77v2 RS485/422	LAN, USB, DI, DO, 1xSIM, RS485/422	83.041.0052.1
LR77v2 MBUS	LAN, USB, DI, DO, 1xSIM, M-Bus	83.041.0053.1
LR77v2 CNT	LAN, USB, 5DI, 3DO, 2AI, 1xSIM	83.041.0054.1
LR77v2 ETH	2x LAN, USB, DI, DO, 1xSIM	83.041.0055.1
wienet LR77v2 SL Compact		
LR77v2c SL ETH	2x LAN, 2xSIM	83.041.0505.3
LR77v2c SL ETH WIFI	2x LAN, WIFI, 2xSIM	83.041.0565.3
wienet LR77v2 SL Full		
LR77v2f SL	LAN, USB, DI, DO, 2xSIM	83.041.0500.1
LR77v2f SL RS232	LAN, USB, DI, DO, 2xSIM, RS232	83.041.0501.1
LR77v2f SL RS485/422	LAN, USB, DI, DO, 2xSIM, RS485/422	83.041.0502.1
LR77v2f SL MBUS	LAN, USB, DI, DO, 2xSIM, M-Bus	83.041.0503.1
LR77v2f SL CNT	LAN, USB, 5DI, 3DO, 2AI, 2xSIM	83.041.0504.1
LR77v2f SL ETH	2xLAN, USB, DI, DO, 2xSIM	83.041.0505.1
LR77v2f SL WIFI	LAN, USB, DI, DO, 2xSIM, WIFI	83.041.0560.1
LR77v2f SL RS232 RS232	LAN, USB, DI, DO, 2xSIM, 2xRS232	83.041.0511.1
LR77v2f SL RS485 RS232	LAN, USB, DI, DO, 2xSIM, RS232, RS485/422	83.041.0512.1
LR77v2f SL MBUS RS232	LAN, USB, DI, DO, 2xSIM, RS232, M-Bus	83.041.0513.1
LR77v2f SL CNT RS232	LAN, USB, 5xDI, 3xDO, 2xAI, 2xSIM, RS232	83.041.0514.1
LR77v2f SL ETH RS232	2xLAN, USB, DI, DO, 2xSIM, RS232	83.041.0515.1
LR77v2f SL RS485 RS485	LAN, USB, DI, DO, 2xSIM, 2xRS485/422	83.041.0522.1
LR77v2f SL MBUS RS485	LAN, USB, DI, DO, 2xSIM, RS485/422, M-Bus	83.041.0523.1
LR77v2f SL CNT RS485	LAN, USB, 5xDI, 3xDO, 2xAI, 2xSIM, RS485/422	83.041.0524.1
LR77v2f SL ETH RS485	2xLAN, USB, DI, DO, 2xSIM, RS485/422	83.041.0525.1
LR77v2f SL RS232 WIFI	LAN, USB, DI, DO, 2xSIM, WIFI, RS232	83.041.0561.1
LR77v2f SL RS485 WIFI	LAN, USB, DI, DO, 2xSIM, WIFI, RS485/422	83.041.0562.1
LR77v2f SL MBUS WIFI	LAN, USB, DI, DO, 2xSIM, WIFI, M-Bus	83.041.0563.1
LR77v2f SL CNT WIFI	LAN, USB, 5xDI, 3xDO, 2xAI, 2xSIM, WIFI	83.041.0564.1
LR77v2f SL ETH WIFI	2xLAN, USB, DI, DO, 2xSIM, WIFI	83.041.0565.1
LR77v2f SL 3-Port	3xLAN, USB, DI, DO, 2xSIM	83.041.0599.1
Networks		
DHCP - automatic IP address in LAN network	NAT/PAT - Network/Port Address Translation	
SNMP - network management, communication to router and its I/O and M-Bus modules	VRRP - redundant communication paths (routing)	
DynDNS - access to router if dynamic IP used	Dial-In - Dial-up router option (network) - communication via "CSD call"	
Integrated firewall (SPI)	OSPF, BGP, RIP - routing protocols (optional)	
VLAN, QoS - expanded Layer 2 network functions (optional)		
VPN tunnel		
Secure data encryption with IPSec and OpenVPN (including X.509 certificates)	Basic data transmission without encoding via GRE and L2TP tunnel	
Configuration and diagnostics		
Web interface	SMS functions	
Several profiles	Comprehensive mobile radio statistics options	
LED status display	Telnet and SSH - command line access	
Optional expansions		
Second SIM card	User (software) module - various function expansions	
Wie-Service24 - VPN server portal		
Additional functions and characteristics		
NTP client, NTP server - time synchronization	Communication via SMS - AT commands to the RS232, Ethernet and I/O interface	
Technical data		
Mounting	DIN rail (top hat rail) or table	
Operating voltage	10 - 30 V DC	
Power consumption	5.5 W max.	
Operating temperature	-30 ... +60 °C	
On-board I/O		
- PIN allocation	DO/GND/DI	
- Output (DO)	120 mA / max. 30 V	
- Input (DI)	10-30 V DC	
Dimensions (HxWxD)	42 x 80.5 x 113.5 mm	
Weight	270 g	
Antenna connector	2x SMA - 50 Ohm	
Frequency bands		
- GSM/GPRS/EDGE	900/1800/1900 MHz	
- UMTS	850/2100 MHz	
- LTE	800/900/1800/2100/2600 MHz	
Download Upload UMTS	Max. 42 Mbit/s Max. 5.7 Mbit/s	
Download Upload LTE	Max. 100 Mbit/s Max. 50 Mbit/s	
Complies with standards	CE, E8	
	EN 61000-4-3, EN 61000-4-8	
	EN 55022, E8 10R-04 7056	

Industrial mobile router 3G UMTS/HSDPA/HSUPA/HSPA+ v2

wienet HSPA+ UR5iv2 SL „Basic“

- 1x SIM card slot
- 1x Ethernet
- 1x RJ45 port expansion
- 1x USB
- 1x DI
- 1x DO

wienet HSPA+ UR5iv2 SL „Compact“

- 2x SIM card slot
- 2x Ethernet (LAN-to-LAN or switch-bridge)
- Best price-performance ratio
- No USB interface
- No DIO

wienet HSPA+ UR5iv2 SL „Full“

- 2x SIM card slot
- 1x Ethernet
- 2x RJ45 port expansion
- 1x USB
- 1x DI
- 1x DO
- GPS receiver (not in combination with WIFI)

Delivery scope:

- VPN mobile router
- Including USB stick with documentation
- Including RJ45 patch cable
- Including DIN rail (top hat rail) adapter



Type	Interfaces	Art.No.
wienet UR5iv2 SL Basic		
UR5iv2	LAN, USB, DI, DO, 1xSIM	83.041.0040.1
UR5iv2 RS232	LAN, USB, DI, DO, 1xSIM, RS232	83.041.0041.1
UR5iv2 RS485/422	LAN, USB, DI, DO, 1xSIM, RS485/422	83.041.0042.1
UR5iv2 MBUS	LAN, USB, DI, DO, 1xSIM, M-Bus	83.041.0043.1
UR5iv2 CNT	LAN, USB, 5DI, 3DO, 2AI, 1xSIM	83.041.0044.1
UR5iv2 ETH	2x LAN, USB, DI, DO, 1xSIM	83.041.0045.1
wienet UR5iv2 SL Compact		
UR5iv2c SL ETH	2x LAN, 2xSIM	83.041.0405.3
UR5iv2c SL ETH WIFI	2x LAN, WIFI, 2xSIM	83.041.0465.4
wienet UR5iv2 SL Full		
UR5iv2f SL	LAN, USB, DI, DO, 2xSIM	83.041.0400.1
UR5iv2f SL RS232	LAN, USB, DI, DO, 2xSIM, RS232	83.041.0401.1
UR5iv2f SL RS485/422	LAN, USB, DI, DO, 2xSIM, RS485/422	83.041.0402.1
UR5iv2f SL MBUS	LAN, USB, DI, DO, 2xSIM, M-Bus	83.041.0403.1
UR5iv2f SL CNT	LAN, USB, 5DI, 3DO, 2AI, 2xSIM	83.041.0404.1
UR5iv2f SL ETH	2xLAN, USB, DI, DO, 2xSIM	83.041.0405.1
UR5iv2f SL WIFI	LAN, USB, DI, DO, 2xSIM, WIFI	83.041.0460.1
UR5iv2f SL RS232 RS232	LAN, USB, DI, DO, 2xSIM, 2xRS232	83.041.0411.1
UR5iv2f SL RS485 RS232	LAN, USB, DI, DO, 2xSIM, RS232, RS485/422	83.041.0412.1
UR5iv2f SL MBUS RS232	LAN, USB, DI, DO, 2xSIM, RS232, M-Bus	83.041.0413.1
UR5iv2f SL CNT RS232	LAN, USB, 5xDI, 3xDO, 2xAI, 2xSIM, RS232	83.041.0414.1
UR5iv2f SL ETH RS232	2xLAN, USB, DI, DO, 2xSIM, RS232	83.041.0415.1
UR5iv2f SL RS485 RS485	LAN, USB, DI, DO, 2xSIM, 2xRS485/422	83.041.0422.1
UR5iv2f SL MBUS RS485	LAN, USB, DI, DO, 2xSIM, RS485/422, M-Bus	83.041.0423.1
UR5iv2f SL CNT RS485	LAN, USB, 5xDI, 3xDO, 2xAI, 2xSIM, RS485/422	83.041.0424.1
UR5iv2f SL ETH RS485	2xLAN, USB, DI, DO, 2xSIM, RS485/422	83.041.0425.1
UR5iv2f SL RS232 WIFI	LAN, USB, DI, DO, 2xSIM, WIFI, RS232	83.041.0461.1
UR5iv2f SL RS485 WIFI	LAN, USB, DI, DO, 2xSIM, WIFI, RS485/422	83.041.0462.1
UR5iv2f SL MBUS WIFI	LAN, USB, DI, DO, 2xSIM, WIFI, M-Bus	83.041.0463.1
UR5iv2f SL CNT WIFI	LAN, USB, 5xDI, 3xDO, 2xAI, 2xSIM, WIFI	83.041.0464.1
UR5iv2f SL ETH WIFI	2xLAN, USB, DI, DO, 2xSIM, WIFI	83.041.0465.1
UR5iv2f SL 3-Port	3xLAN, USB, DI, DO, 2xSIM	83.041.0499.1
Networks		
DHCP - automatic IP address in LAN network	NAT/PAT - Network/Port Address Translation	
SNMP - network management, communication to router and its I/O and M-Bus modules	VRRP - redundant communication paths (routing)	
DynDNS - access to router if dynamic IP used	Dial-In - Dial-up router option (network) - communication via "CSD call"	
Integrated firewall (SPI)	OSPF, BGP, RIP - routing protocols (optional)	
VLAN, QoS - expanded Layer 2 network functions (optional)		
VPN tunnel		
Secure data encryption with IPSec and OpenVPN (including X.509 certificates)	Basic data transmission without encoding via GRE and L2TP tunnel	
Configuration and diagnostics		
Web interface	SMS functions	
Several profiles	Comprehensive mobile radio statistics options	
LED status display	Telnet and SSH - command line access	
Optional expansions		
Second SIM card	User (software) module - various function expansions	
Wie-Service24 - VPN server portal		
Additional functions and characteristics		
NTP client, NTP server - time synchronization	Communication via SMS - AT commands to the RS232, Ethernet and I/O interface	
Technical data		
Mounting	DIN rail (top hat rail) or table	
Operating voltage	10 - 30 V DC	
Power consumption	5.5 W max.	
Operating temperature	-30 ... +60 °C	
On-board I/O		
- PIN allocation	DO/GND/DI	
- Output (DO)	120 mA / max. 30 V	
- Input (DI)	10-30 V DC	
Dimensions (HxWxD)	42 x 80.5 x 113.5 mm	
Weight	287 g	
Antenna connector	2x SMA - 50 Ohm	
Frequency bands		
- GSM/GPRS/EDGE	800/900/1800/1900 MHz	
- UMTS	850/900/1900/2100 MHz	
Complies with standards	CE, E8	
	EN 61000-4-3, EN 61000-4-8	
	EN 55022, E8 10R-04 7056	

Industrial LAN router

wienet WR-LAN v3 SL

- High-performance CPU Cortex A8, 1 GHz (2000 DMIPS)
- Memory: 256 MB flash memory, 512 MB RAM, 128 kB M-RAM
- 5x Ethernet
- 1x USB 2.0 host
- 2x DI
- 1x DO
- 1x MicroSD
- 1x WIFI/WLAN 802.11 b/g/n (optional), supports access point and client mode

Delivery scope:

- VPN LAN router
- Including USB stick with documentation
- Including RJ45 patch cable
- Including DIN rail (top hat rail) adapter



Type	Interfaces	Art.No.
wienet WR-LANv3 SL		
WR-LAN v3 SL 5-Port	5xLAN, USB, DI, DO	83.041.0809.1
WR-LAN v3 SL 5-Port WIFI	5xLAN, USB, DI, DO, WIFI	83.041.0869.1
Networks		
DHCP - automatic IP address in LAN network	NAT/PAT - Network/Port Address Translation	
SNMP v1/v2c/v3 - Network management, communication to router and its I/O and M-Bus modules	VRRP - redundant communication paths (routing)	
PPPoE bridge	DynDNS - access to router if dynamic IP used	
IGMP, BGP, OSPF, RIP, SMTP, SMTPS	OSPF, BGP, RIP - routing protocols (optional)	
Integrated firewall (SPI)	VLAN, QoS - expanded Layer 2 network functions (optional)	
DMVPN	HTTPS, SSH, SFTP	
VPN tunnel		
Secure data encryption with IPSec and OpenVPN (including X.509 certificates)	Basic data transmission without encoding via GRE and L2TP tunnel	
EasyVPN		
Configuration and diagnostics		
Configuration and firmware update via Web interface, USB stick and central Internet server	One-CLICK reports: Current configuration, system log, routing table, reboot log, kernel log	
LED status display	Change between different configuration profiles (via Web digital input, or scheduler)	
SNMP v1/v2c/v3 - status query	Network status	
Optional expansions		
Wie-Service24 - VPN server portal	User (software) module - various function expansions	
Additional functions and characteristics		
Script programming - StartUp script, Up/Down script	NTP client, NTP server - time synchronization	
Script language Bash, Python		
Technical data		
Mounting	DIN rail (top hat rail) or table	
Operating voltage	10 - 60 V DC	
Power consumption typical / average / peak / sleep mode	2 W / 3.25 W / 4.5 W / 10 mW	
Operating temperature / storage temperature	-30 ... +60 °C / -40 ... +85 °C	
Humidity	0 ... 95 %	
Protection type	IP30	
On-board I/O		
- Output (DO)	300 mA / max. 60 V	
- 2x input (DI)	10-60 V DC	
Dimensions (HxWxD)	125 x 55 x 97	
Weight	327 g	
Antenna connector		
- WIFI antenna (optional)	R-SMA	
Technical data microSD		
- Supported technologies	SDHC, SDXC	
- Supported capacities	SDHC to 32 GB, SDXC from 32 GB to 64 GB	
Complies with standards	EN 61000-4-2 (ESD), IEC 61000-4-3 (RF field AM modulated), EN 61000-4-4 (fast transient), EN 61000-4-5 (surge) EN 61000-4-6 (RF-conducted), EN 55022, EN 61000-4-8, EN 60068-2-2, EN 60068-2-1, EN 60068-2-78, E8 10R-04	



Industrial LAN router

wiernet LAN Router XR5iv2 SL

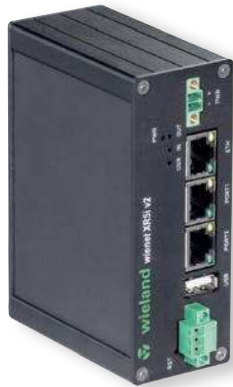
- 1x Ethernet
- 1x RJ45 port expansion
- 1x USB
- 1x DI
- 1x DO

wiernet LAN Router XR5iv2 SL „compact“

- 2x Ethernet (LAN-to-LAN or switch-bridge)
- Best price-performance ratio
- No USB interface
- No DIO

Delivery scope:


VPN LAN router
Including USB stick with documentation
Including RJ45 patch cable
Including DIN rail (top hat rail) adapter



Type	Interfaces	Art.No.
wiernet XR5iv2 SL		
XR5iv2 ETH	2xLAN, USB, DI, DO	83.041.0605.1
XR5iv2 ETEH RS232	2xLAN, USB, DI, DO, RS232	83.041.0615.1
XR5iv2 ETH RS485/422	2xLAN, USB, DI, DO, RS485/422	83.041.0625.1
XR5iv2 ETH MBUS	2xLAN, USB, DI, DO, M-Bus	83.041.0635.1
XR5iv2f SL WIFI	LAN, USB, DI, DO, WIFI	83.041.0660.1
XR5iv2f SL RS232 WIFI	LAN, USB, DI, DO, WIFI, RS232	83.041.0661.1
XR5iv2f SL RS485 WIFI	LAN, USB, DI, DO, WIFI, RS485/422	83.041.0662.1
XR5iv2f SL MBUS WIFI	LAN, USB, DI, DO, WIFI, M-Bus	83.041.0663.1
XR5iv2f SL CNT WIFI	LAN, USB, 5xDI, 3xDO, 2xAI, WIFI	83.041.0664.1
XR5iv2f SL ETH WIFI	2xLAN, USB, DI, DO, WIFI	83.041.0665.1
wiernet XR5iv2 SL Compact		
XR5iv2c SL ETH	2x LAN	83.041.0605.3
XR5iv2c SL ETH WIFI	2x LAN, WIFI	83.041.0665.3
Networks		
DHCP - automatic IP address in LAN network	NAT/PAT - Network/Port Address Translation	
SNMP - network management, communication to router and its I/O and M-Bus modules	VRRP - redundant communication paths (routing)	
Integrated firewall (SPI)	DynDNS - access to router if dynamic IP used	
VLAN, QoS - expanded Layer 2 network functions (optional)	OSPF, BGP, RIP - routing protocols (optional)	
PPPoE - DSL modem support		
VPN tunnel		
Secure data encryption with IPSec and OpenVPN (including X.509 certificates)	Basic data transmission without encoding via GRE and L2TP tunnel	
Configuration and diagnostics		
Web interface	Several profiles	
LED status display	Telnet and SSH - command line access	
Optional expansions		
User (software) module - various function expansions	Wie-Service24 - VPN server portal	
Additional functions and characteristics		
NTP client, NTP server - time synchronization		
Technical data		
Mounting	DIN rail (top hat rail) or table	
Operating voltage	10 - 30 V DC	
Power consumption	5.5 W max.	
Operating temperature	-30 ... +60 °C	
On-board I/O		
- PIN allocation	DO/GND/DI	
- Output (DO)	120 mA / max. 30 V	
- 2x input (DI)	10-30 V DC	
Dimensions (HxWxD)	42 x 80.5 x 113.5 mm	
Weight	270 g	
Complies with standards	CE	
	EN 61000-4-3, EN 61000-4-8	
	EN 55022	


Accessories

Round beam roof antenna
wienet Antenna LPB-7-27




Type	Art.No.
wienet Antenne 15863-v2	F0.000.0035.1
Technical data	
Frequency range	GSM, GPRS, EDGE, UMTS, LTE
Connector	SMA/M
Gain	4 dBi
Cable length	5 m
Dimensions (mm)	Approx. 82 x 48 x 48
Mounting	Including mast or wall mounting bracket

Magnetic holder for antennas with SMA/M connection
wienet Antenna 15018




Type	Art.No.
wienet Antenne 15018	F0.000.0036.1
Technical data	
Frequency range	GSM, GPRS, EDGE, UMTS, LTE
Antenna connector	SMA/F
Cable connector	SMA/M
Cable length	2,5 m
Dimensions (H x ø)	42/50 mm
Mounting	Magnetic holder

LTE antenna
wienet Antenna 15018A




Type	Art.No.
wienet Antenne 15018A	F0.000.0036.2
Technical data	
Frequency range	GSM, GPRS, EDGE, UMTS, LTE
Cable connector	2x SMA/M
Gain	Max. 5 dBi
Dimensions	Height approx. 240 mm

Vehicle antenna
wienet Antenna 15869v2




Type	Art.No.
wienet Antenne 15869v2	F0.000.0035.2
Technical data	
Frequency range	GSM, GPRS, EDGE, UMTS, LTE
Radio technology	Supports MiMo and Diversity (no directional radio)
Cable connector	2x SMA/M
Gain	Max. 5 dBi
Cable length	2 x 5 m
Dimensions (H x ø)	82 x 176 mm
Mounting	Roof mounting

LTE panel antenna
wienet Antenna 15862v2
High-performance outdoor antenna for LTE



Type	Art.No.
wienet Antenne 15862v2	F0.000.0037.6
Technical data	
Frequency range	GSM, GPRS, EDGE, UMTS, LTE
Cable connector	2x SMA/M
Gain	Max. 5 dBi
Cable length	2 x 5 m
Dimensions	186 x 155 mm
Mounting	Wall or mast mounting, including wall holder






LTE panel antenna
wienet Antenna 15872v2
High-performance outdoor antenna for LTE



Type	Art.No.
wienet Antenne 15872v2	F0.000.0037.8
Technical data	
Frequency range	GSM, GPRS, EDGE, UMTS, LTE
Cable connector	2x SMA/M
Gain	Max. 9 dBi
Cable length	2 x 5 m
Dimensions	230 x 180 mm
Mounting	Wall or mast mounting, including wall holder

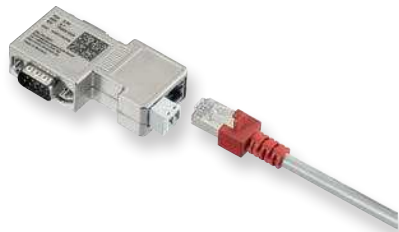


Accessories

<p>Round beam Rod antenna wienet GXS606</p> 	<table border="1"> <thead> <tr> <th>Type</th> <th>Art.No.</th> </tr> </thead> <tbody> <tr> <td>wienet GXS606</td> <td>83.041.0210.0</td> </tr> <tr> <td colspan="2">Technical data</td> </tr> <tr> <td>Frequency range</td> <td>GSM, GPRS, EDGE, UMTS</td> </tr> <tr> <td>Connector</td> <td>FME/F</td> </tr> <tr> <td>Gain</td> <td>2.2 dBi</td> </tr> <tr> <td>Cable length</td> <td>5 m</td> </tr> <tr> <td>Rod length (mm)</td> <td>Approx. 300</td> </tr> </tbody> </table>	Type	Art.No.	wienet GXS606	83.041.0210.0	Technical data		Frequency range	GSM, GPRS, EDGE, UMTS	Connector	FME/F	Gain	2.2 dBi	Cable length	5 m	Rod length (mm)	Approx. 300								
Type	Art.No.																								
wienet GXS606	83.041.0210.0																								
Technical data																									
Frequency range	GSM, GPRS, EDGE, UMTS																								
Connector	FME/F																								
Gain	2.2 dBi																								
Cable length	5 m																								
Rod length (mm)	Approx. 300																								
<p>Flat antenna wienet GXR623</p> 	<table border="1"> <thead> <tr> <th>Type</th> <th>Art.No.</th> </tr> </thead> <tbody> <tr> <td>wienet GXR623</td> <td>83.041.0200.0</td> </tr> <tr> <td colspan="2">Technical data</td> </tr> <tr> <td>Frequency range</td> <td>GSM, GPRS, EDGE, UMTS</td> </tr> <tr> <td>Connector</td> <td>SMA/M</td> </tr> <tr> <td>Gain</td> <td>2.2 dBi</td> </tr> <tr> <td>Cable length</td> <td>2.5 m</td> </tr> <tr> <td>Dimensions (mm)</td> <td>Approx. 75 x 80 x 13</td> </tr> </tbody> </table>	Type	Art.No.	wienet GXR623	83.041.0200.0	Technical data		Frequency range	GSM, GPRS, EDGE, UMTS	Connector	SMA/M	Gain	2.2 dBi	Cable length	2.5 m	Dimensions (mm)	Approx. 75 x 80 x 13								
Type	Art.No.																								
wienet GXR623	83.041.0200.0																								
Technical data																									
Frequency range	GSM, GPRS, EDGE, UMTS																								
Connector	SMA/M																								
Gain	2.2 dBi																								
Cable length	2.5 m																								
Dimensions (mm)	Approx. 75 x 80 x 13																								
<p>WLAN/WIFI antenna wienet Antenna 15854v2 WIFI</p> 	<table border="1"> <thead> <tr> <th>Type</th> <th>Art.No.</th> </tr> </thead> <tbody> <tr> <td>wienet Antenne 15854v2 WIFI</td> <td>F0.000.0037.4</td> </tr> <tr> <td colspan="2">Technical data</td> </tr> <tr> <td>Frequency range</td> <td>2.4 GHz ISM band for WIFI/WLAN, Bluetooth or Zigbee</td> </tr> <tr> <td>Connector</td> <td>SMA/M-RP</td> </tr> <tr> <td>Cable</td> <td>RG 174</td> </tr> <tr> <td>Gain</td> <td>4.8 dBi</td> </tr> <tr> <td>Polarization</td> <td>Vertical</td> </tr> <tr> <td>Resistor</td> <td>50 Ohm</td> </tr> <tr> <td>Cable length</td> <td>2.5 m</td> </tr> <tr> <td>Dimensions</td> <td>223 x 29 mm</td> </tr> <tr> <td>Mounting</td> <td>Roof mounting</td> </tr> </tbody> </table>	Type	Art.No.	wienet Antenne 15854v2 WIFI	F0.000.0037.4	Technical data		Frequency range	2.4 GHz ISM band for WIFI/WLAN, Bluetooth or Zigbee	Connector	SMA/M-RP	Cable	RG 174	Gain	4.8 dBi	Polarization	Vertical	Resistor	50 Ohm	Cable length	2.5 m	Dimensions	223 x 29 mm	Mounting	Roof mounting
Type	Art.No.																								
wienet Antenne 15854v2 WIFI	F0.000.0037.4																								
Technical data																									
Frequency range	2.4 GHz ISM band for WIFI/WLAN, Bluetooth or Zigbee																								
Connector	SMA/M-RP																								
Cable	RG 174																								
Gain	4.8 dBi																								
Polarization	Vertical																								
Resistor	50 Ohm																								
Cable length	2.5 m																								
Dimensions	223 x 29 mm																								
Mounting	Roof mounting																								
<p>WLAN/WIFI roof or wall antenna wienet Antenna 15874v2 WIFI</p> 	<table border="1"> <thead> <tr> <th>Type</th> <th>Art.No.</th> </tr> </thead> <tbody> <tr> <td>wienet Antenne 15874v2 WIFI</td> <td>F0.000.0037.5</td> </tr> <tr> <td colspan="2">Technical data</td> </tr> <tr> <td>Frequency range</td> <td>2.4 GHz ISM band for WIFI/WLAN, Bluetooth or Zigbee</td> </tr> <tr> <td>Connector</td> <td>SMA/R</td> </tr> <tr> <td>Gain</td> <td>4.8 dBi</td> </tr> <tr> <td>Resistor</td> <td>50 Ohm</td> </tr> <tr> <td>Cable length</td> <td>5 m</td> </tr> <tr> <td>Dimensions (mm)</td> <td>Approx. 82 x 48 x 48</td> </tr> <tr> <td>Mounting</td> <td>Including mast or wall mounting bracket</td> </tr> </tbody> </table>	Type	Art.No.	wienet Antenne 15874v2 WIFI	F0.000.0037.5	Technical data		Frequency range	2.4 GHz ISM band for WIFI/WLAN, Bluetooth or Zigbee	Connector	SMA/R	Gain	4.8 dBi	Resistor	50 Ohm	Cable length	5 m	Dimensions (mm)	Approx. 82 x 48 x 48	Mounting	Including mast or wall mounting bracket				
Type	Art.No.																								
wienet Antenne 15874v2 WIFI	F0.000.0037.5																								
Technical data																									
Frequency range	2.4 GHz ISM band for WIFI/WLAN, Bluetooth or Zigbee																								
Connector	SMA/R																								
Gain	4.8 dBi																								
Resistor	50 Ohm																								
Cable length	5 m																								
Dimensions (mm)	Approx. 82 x 48 x 48																								
Mounting	Including mast or wall mounting bracket																								
<p>Antenna extension wienet Antenna 15815v2</p> 	<table border="1"> <thead> <tr> <th>Type</th> <th>Art.No.</th> </tr> </thead> <tbody> <tr> <td>wienet Antenne 15815v2</td> <td>F0.000.0036.7</td> </tr> <tr> <td colspan="2">Technical data</td> </tr> <tr> <td>Connector</td> <td>SMA female / SMA male</td> </tr> <tr> <td>Cable</td> <td>Low-loss cable</td> </tr> <tr> <td>Cable length</td> <td>10 m</td> </tr> </tbody> </table>	Type	Art.No.	wienet Antenne 15815v2	F0.000.0036.7	Technical data		Connector	SMA female / SMA male	Cable	Low-loss cable	Cable length	10 m												
Type	Art.No.																								
wienet Antenne 15815v2	F0.000.0036.7																								
Technical data																									
Connector	SMA female / SMA male																								
Cable	Low-loss cable																								
Cable length	10 m																								

Accessories

Programming adapter MPI-ETH ADAPTER ACCON-NETLINK-PRO



Type	Art.No.
MPI-ETH ADAPTER ACCON-NETLINK-PRO	F0.000.0031.8
Technical data	
Supported operating systems	No restriction
Hardware requirements	Ethernet interface and TCP/IP protocol
Supported SPS	S7-200, S7-300, S7-400
Weight in kg	Approx. 0.25
Protection type	IP 20
Operating voltage	24 V DC ± 25 %
External power supply	Yes
Max. current consumption	150 mA
Electrically isolated	Yes
Operating temperature	0 °C to 60 °C
Storage/transport temperature	-20 °C to 90 °C
Admissible relative air humidity	5 % to 85 % at 30 °C (non-condensing)
Connection cable to the PLC	Permanently mounted, active (no stub line, 1.2 m)
Connection cable to PC/router	Patch cable (Ethernet, straight, 3 m)
Supported bus profiles	MPI, DP, standard, universal (DP/FMS), user-defined, with automatic detection
Supported transmission rates from bus connection to PLC	9.6 Kbit/s to 12 Mbit/s with automatic detection
Supported Ethernet transmission rates	10/100 Mbit/s with automatic detection
Max. number of connections on TCP/IP	16

Switching power supply 12 V for v3 router *wienet PS 12 V v3*



Type	Art.No.
<i>wienet PS 12 V v3</i>	F0.000.0037.7
Technical data	
Input voltage	100-240 V AC 50/60 Hz
Output voltage	12 V DC
Output current max.	1000 mA

Switching power supply 12 V for v2 router *wienet PS 12 V v2*



Type	Art.No.
<i>wienet PS 12 V v2</i>	F0.000.0037.3
Technical data	
Input voltage	100-240 V AC 50/60 Hz
Output voltage	12 V DC
Output current max.	1000 mA

Pre-assembled 6-pole IO male with wires for v3 router *wienet IO cable v3*

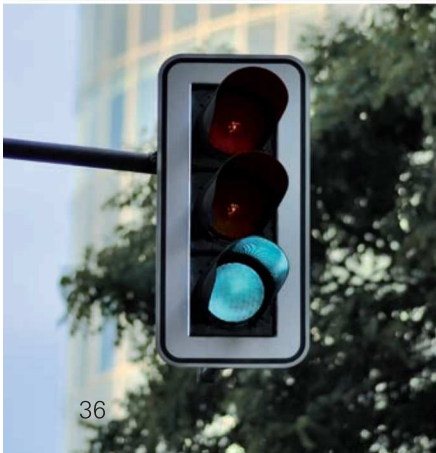


Type	Art.No.
<i>wienet IO cable 1 m</i>	F0.000.0037.9
<i>wienet IO cable 3 m</i>	F0.000.0038.0
Technical data	
Cables	CYA 0.5 mm ² (2x white, 2x purple, 2x orange)
Male	WR-MPC4 for v3-router IO interface

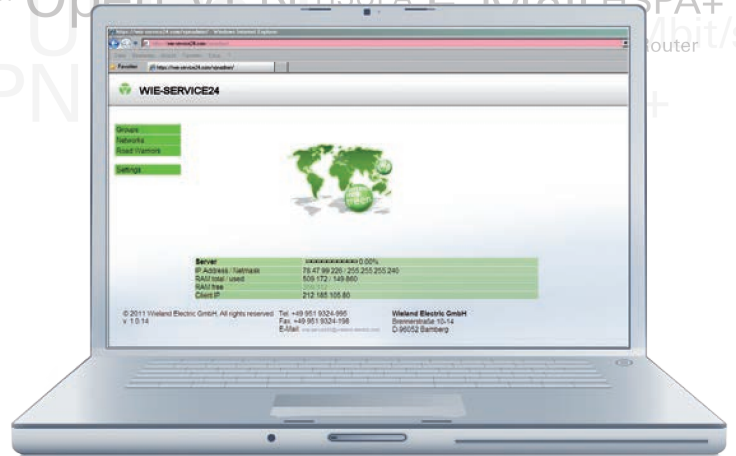


M2M device management with own OpenVPN server

Wie-Service24



Open VPN HSDPA
 DynDNS SMS Highspeed Router GPRS
 GSM EDGE HSDPA UMTS Ipsec 21,1 Mbit/s
 HSPA+ Open VPN HSUPA E Mail HSPA+
 router



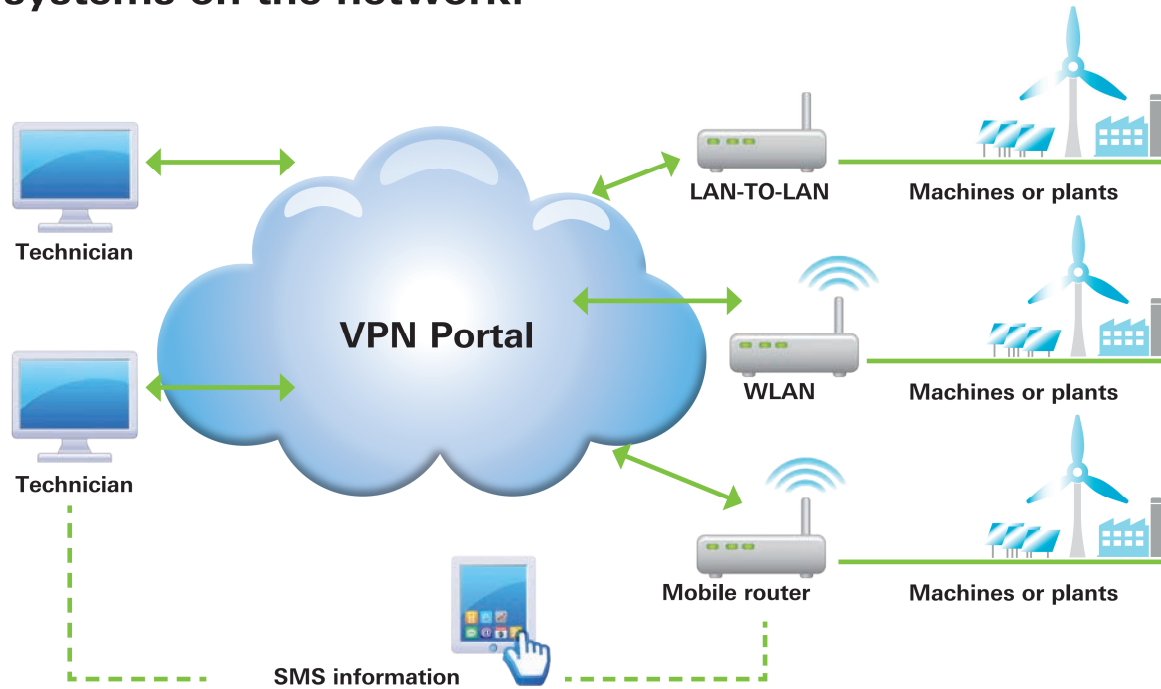
A perfect team

With the **wienet** VPN industrial routers from Wieland and the VPN service portal Wie-Service24, VPN communication in the cloud is child's play. Interlink everything securely and dependably – from individual devices to entire systems – this is the modular router guarantee and the cloud-based management solution Wie-Service24.

Advantages

- Security through VPN
- Automatic generation of router configuration
- Only outgoing connections to Wie-Service24 are needed
- No access to local network required
- Connection of complete networks without additional routing settings
- Less need for coordination with IT and simple commissioning
- Mobile access to all devices after router with smartphone or tablet PC
- directRemote: Direct access to each browser via an explicit URL

Wie-Service24 VPN Service Portal All systems on the network!



The Wie-Service24 VPN service portal is available in different variants:

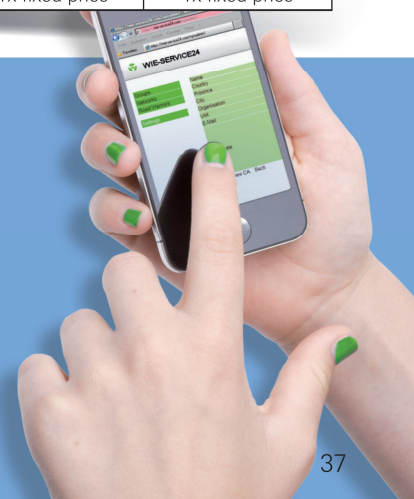
The Wieland VPN server Wie-Service24 can be used for entry (up to 30 router clients / 30 PC clients) at no cost. Afterwards, additional accesses on a lease basis or installation of your own server portal are possible. Installation of the portal on virtual machine, in data center in customer RZ or data center on Internet server. The small VPN server "Smart-Service24", delivered completely installed on its own energy-saving hardware, is also suitable for entry to a server portal of your own.

	Starter kit	Single VPN client License	Virtual machine	Data center Customer RZ	Data center Internet server	Small VPN server Smart-Service24
Art.No.	ZD.000.0011.1	ZD.000.0011.0	ZD.000.0012.0	ZD.000.0015.0	ZD.000.0016.0	ZD.000.0017.0
Client access	•	•	•	•	•	•
Name	WIE-SERVICE24 30	WIE-SERVICE24 R	WIE-SERVICE24 VM	WIE-SERVICE24 DC Custom	WIE-SERVICE24 DC Internet	SMART-SERVICE24
Administration access	–	–	•	•	•	•
Server hardware from	Wieland	Wieland	Customer	Customer	Provider	Wieland
Internet connection via	Wieland	Wieland	Customer		Provider	Wieland
Installation by	Wieland	Wieland	Customer or Wieland		Wieland	Wieland (completely installed)
Number of VPN client licenses "PC"	30	1	> 1000	> 1000	> 1000	100
Number of VPN client licenses "Router"	30	1	> 1000	> 1000	> 1000	100
Cost model	No cost	Lease basis	1x fixed price*	1x fixed price*	1x fixed price*	1x fixed price

* Maintenance contract on request

Additional information is available from our Technical Service:

Phone +49 951 9324-995
 Fax +49 951 9326-991
wie-service24@wieland-electric.com



VPN server "Wie-Service24"

The VPN service portal WIE-SERVICE24 ensures the secure connection of your machines and systems. Individual determination of the access rights and encoding of the VPN connections protect your machines and systems. Tedious, error-prone manual router configuration is no longer necessary. Remote access can be accomplished with any Internet-capable PC or smartphone. If the VPN connection happens to break off once, WIE-SERVICE24 reestablishes it.

VPN licenses WIE-SERVICE24

- 30 VPN client licenses included for new router clients
- Additional VPN client licenses



Type	Art.No.
wienet WIE-SERVICE24-30	ZD.000.0011.1
Complete network routing for up to 30 Wieland VPN routers, VPN client accesses for PCs and mobile end-user devices included for new customers.	
wienet WIE-SERVICE24-R	ZD.000.0011.0
Individual access to the VPN server portal WIE-SERVICE24 enables complete network routing for a Wieland VPN router; you also receive VPN client accesses for PCs and smartphones at no cost. After the 30 free VPN client licenses are reached, additional licenses can be added at a charge. Invoicing is on an annual basis.	
Technical data	
30 software single licenses with fixed IP included	<ul style="list-style-type: none"> - Client access - No administration access; VPN accesses set up and hosted by Wieland - Server hardware in the industrial data center - Administration via Web interface, SSL and SSH
Firewall	<ul style="list-style-type: none"> - Stateful inspection firewall - Failover mechanism present
Technical data: VPN server	<ul style="list-style-type: none"> - Max. data throughput: Wire speed - Max. number of VPN sessions: 1000 - Number of determined VPN tunnels: 1000 - SSL/TLS - Blowfish encoding - Authentication: PKI

VPN service portal WIE-SERVICE24 full server license

- Virtual machine
- Customer server
- Internet data center



Type	Art.No.
wienet WIE-SERVICE24-VM	ZD.000.0012.0
As a virtual machine for the Oracle VirtualBox, the VPN service portal WIE-SERVICE24 enables full network routing for almost any number of Wieland VPN routers. Additional virtualization environments can be established by installation from a CD. The operating system Debian GNU/Linux is a component of the installation CD/DVD.	
wienet WIE-SERVICE24-DC-Custom	ZD.000.0015.0
The VPN service portal WIE-SERVICE24, installed ready-to-operate in your data center, enables full network routing for any number of Wieland VPN routers. You can set up and manage as many VPN client accesses as you want, on your own. The client configurations are automatically generated from the VPN service portal.	
wienet WIE-SERVICE24-DC-Intern.	ZD.000.0016.0
The VPN service portal WIE-SERVICE24 in the Internet data center- our Top Seller! Installed ready-to-operate at your Internet service provider, enables full network routing for any number of Wieland VPN routers. You can set up and manage as many VPN client accesses as you want, on your own. The client configurations are automatically generated from the VPN service portal.	
Technical data	
VPN server portal:	<ul style="list-style-type: none"> - Administration and client access - Server hardware and Internet connection by customer - For Oracle VirtualBox - Installation by customer or Wieland partner - On server at customer's - Administration via Web interface, SSL and SSH - On server at Internet service provider
Firewall	<ul style="list-style-type: none"> - Stateful inspection firewall - Failover mechanism present
VPN	<ul style="list-style-type: none"> - Max. data throughput: Wire speed - Max. number of simultaneous VPN sessions: 1000 - Number of determined VPN tunnels: 1000 - SSL/TLS - Blowfish encoding - Authentication: PKI
Service	<ul style="list-style-type: none"> - Four weeks of telephone installation support - 12 months of update service

VPN server “Smartservice24”

The compact VPN server SMARTSERVICE24 enables your easy entry to a VPN infrastructure of your own. It ensures the secure connection of your machines and systems: You are protected by individual determination of access rights and encoding of VPN connections. You set up the authorization management in seconds, individually for each device. Tedious, error-prone manual router configuration is no longer necessary. Remote access can be accomplished with any Internet-capable PC or smartphone. If the VPN connection happens to break off once, the Digicluster reestablishes it independently.

Compact VPN server SMARTSERVICE24



Type	Art.No.
wienet SMARTSERVICE24	ZD.000.0017.0
Features	
The compact VPN server SMARTSERVICE24, installed ready-to-operate on a small, energy-saving hardware unit, enables full network routing for up to 100 Wieland VPN routers. Also, up to 100 VPN client accesses for PCs and smartphones can be set up and managed. The client configurations are automatically generated from the VPN service portal.	
Technical data	
Software installed ready-to-operate on environmentally-friendly embedded hardware.	<ul style="list-style-type: none"> - Limited to 100 VPN tunnels - Administration and client access - Server hardware from Wieland - Internet connection by customer - Administration via Web interface, SSL and SSH
Firewall	<ul style="list-style-type: none"> - Stateful inspection firewall - Failover mechanism present
VPN	<ul style="list-style-type: none"> - Max. data throughput: Wire speed - Max. number of VPN sessions: 100 - Number of determined VPN tunnels: 100 - SSL/TLS - Blowfish encoding - Authentication: PKI
Service	<ul style="list-style-type: none"> - One-time feature update - 12 months of update service

